

The data are from the paper:

Exploring Relationships in Body Dimensions

Grete Heinz and Louis J. Peterson
San José State University

Roger W. Johnson and Carter J. Kerk
South Dakota School of Mines and Technology

Journal of Statistics Education Volume 11, Number 2 (2003), <https://goo.gl/WMXNbj>

Copyright © 2003 by Grete Heinz, Louis J. Peterson, Roger W. Johnson, and Carter J. Kerk, all rights reserved. This text may be freely shared among individuals, but it may not be republished in any medium without express written consent from the authors and advance notification of the editor.

<https://goo.gl/CTbtWg>

The problem

To investigate the hypothesis:

Male and female waist girth measurements are the same.

Data collection

The data are in the Excel spreadsheet '**Adult Measurements.xlsx**'.

The worksheet named **Data** has 15 variables in the columns with column headers and data for 507 respondents in the rows.

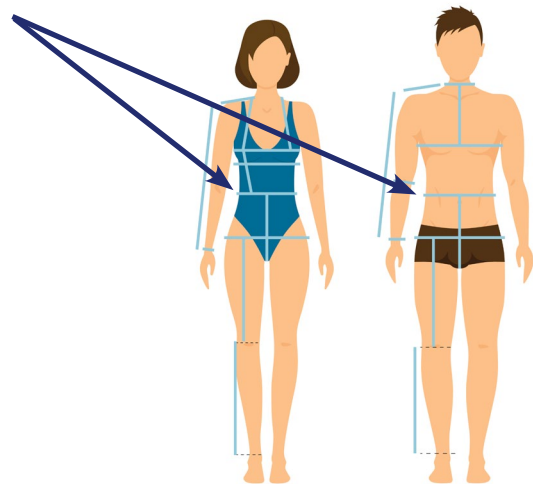
The worksheet named **Information** has the definitions for the variables and coding for gender.

Waist girth is the narrowest part of torso below the rib cage.

The average of contracted and relaxed position was recorded.

From **Section 1**:

- There are no missing values.
- The measurements can be considered accurate.
- The target population is American adults who are physically active.



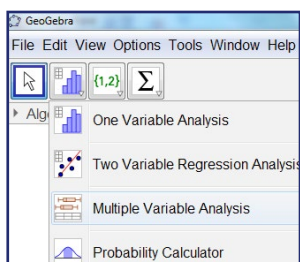
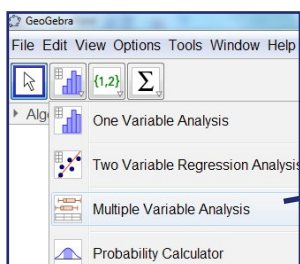
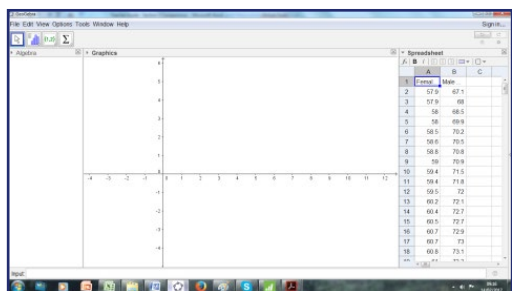
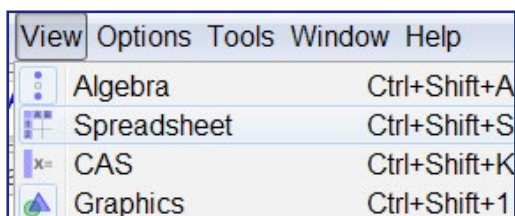
Process

Distributions of variables can be compared using box plots or histograms. Whichever graphs are plotted it is important that the same scales are used.

It is tricky to plot box plots in Excel (see '**Box plots in Excel.docx**' for instructions on how to do this).

Plot box plots of '**Waist girth**' for males and females in **GeoGebra**..

To plot a box plot in GeoGebra



- **Open GeoGebra** select **View** then **Spreadsheet**
- Open the Excel spreadsheet '**Adult Measurements.xlsx**'
- In the worksheet **MaleFemaleWaist** select columns **A** and **B**
- Right click **Copy**
- In **GeoGebra** select **A1**, right click **Paste**

In **GeoGebra**:

- Select columns **A** and **B**
- Click on the histogram icon
- Select **Multiple Variable Analysis**
- Click on the icon, select **Use Header as Title**, then **Analyse**
- Click and drag the borders of the graph window to make the box plots bigger

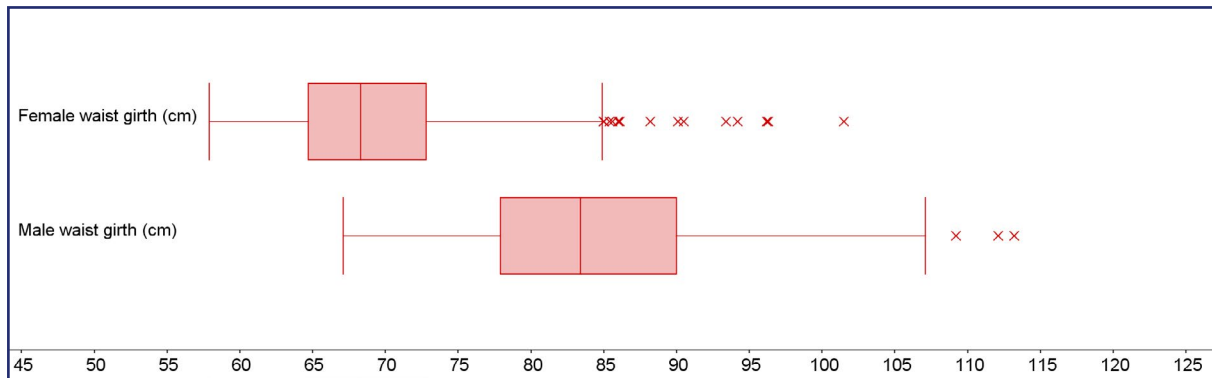
Right click on the graph and you can either:

- **Copy to Graphics View** (this is within GeoGebra)
- **Copy to Clipboard**
- **Export as Picture.**

Below is the box plot copied to Clipboard and pasted into Word. A title was added. (Note: Clicking on the icon will give summary statistics for the two variables.)

GeoGebra shows outliers as small crosses.

Waist girth for a sample of 260 US females and 247 US males



Comment on the outliers.

Use the formulae in the table to calculate the lower and upper limits for outliers.

Outlier limit	Female waist girth (cm)	Male waist girth (cm)
Lower limit = $Q_1 - 1.5 \times IQR$		
Upper limit = $Q_3 + 1.5 \times IQR$		

Do the calculated limits agree with the outliers on the box plots?

To decide if these outliers are errors, anomalies or accurate data, in the worksheet **Male** sort the data and inspect upper outliers for '**Male waist girth**'.

Similarly, in the worksheet **Female** sort the data and inspect upper outliers for '**Female waist girth**'.

Section 2

Comparing distributions - Worksheet

	A	B	C	D	E	F	G	H	I	J	K	L	M	N	O
1	Male shoulder girth (cm)	Male waist girth (cm)	Male navel girth (cm)	Male hip girth (cm)	Male thigh girth (cm)	Male bicep girth (cm)	Male forearm girth (cm)	Male knee girth (cm)	Male calf girth (cm)	Male ankle girth (cm)	Male wrist girth (cm)	Male age (years)	Male weight (kg)	Male height (cm)	Gender
2	127.0	113.2	102.9	107.9	57.7	37.4	28.9	37.8	37.4	24.1	17.1	28	102.5	177.8	Male
3	119.7	112.1	105.9	106.3	56.9	35.7	27.8	37.3	36.6	22.7	16.4	46	92.7	179.1	Male
4	110.6	109.2	104.4	101.7	56.4	34.0	29.2	39.3	38.5	24.3	17.4	55	94.1	185.4	Male
5	127.0	107.1	107.2	108.3	67.0	39.6	30.6	40.0	39.6	24.6	17.7	33	101.6	192.0	Male
6	134.8	105.2	105.0	115.5	69.9	39.4	32.1	42.2	47.7	27.0	19.2	27	116.4	177.8	Male
7	118.8	105.2	103.4	108.1	60.5	38.0	30.2	36.9	37.7	21.6	18.3	42	85.9	166.4	Male

Upper outliers for 'Male waist girth'

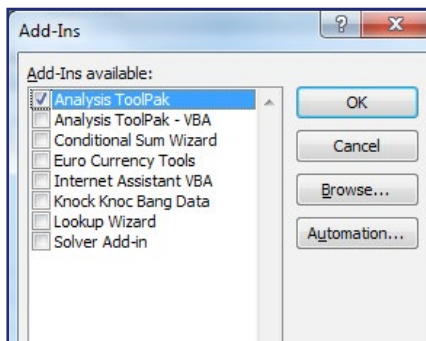
	A	B	C	D	E	F	G	H	I	J	K	L	M	N	O
1	Female shoulder girth (cm)	Female waist girth (cm)	Female navel girth (cm)	Female hip girth (cm)	Female thigh girth (cm)	Female bicep girth (cm)	Female forearm girth (cm)	Female knee girth (cm)	Female calf girth (cm)	Female ankle girth (cm)	Female wrist girth (cm)	Female age (years)	Female weight (kg)	Female weight (cm)	Gender
2	129.5	101.5	105.5	114.0	70.0	40.3	30.8	45.6	45.0	25.8	18.2	34	105.2	172.7	Female
3	110.8	96.3	104.2	102.6	57.5	34.3	26.5	38.3	41.1	22.9	16.4	41	80.0	161.0	Female
4	127.1	96.2	121.1	128.3	72.3	35.9	30.6	49.0	45.4	24.1	17.8	43	104.1	165.1	Female
5	115.6	94.2	110.5	103.5	57.8	35.7	25.6	34.8	35.5	19.5	15.0	37	81.8	162.6	Female
6	111.0	93.4	111.1	109.8	67.7	35.7	28.6	41.5	38.6	22.3	17.3	41	84.5	162.6	Female
7	115.5	90.5	103.5	108.1	61.1	33.6	26.6	37.2	35.8	22.6	16.3	40	75.2	160.2	Female
8	112.1	90.1	90.1	95.2	53.8	32.1	25.8	34.7	37.2	21.5	15.8	32	67.2	156.5	Female
9	115.2	88.2	106.5	107.9	63.1	30.3	25.2	39.2	38.4	23.1	16.4	26	86.3	165.1	Female
10	106.4	86.1	107.4	112.0	69.4	31.7	25.5	39.4	38.7	23.7	16.3	33	80.5	160.0	Female
11	104.0	86.0	107.1	112.1	64.4	32.3	26.4	35.7	37.0	21.4	15.8	40	76.8	157.5	Female
12	99.5	85.6	111.7	112.1	64.3	31.3	25.0	35.5	38.0	21.0	14.6	36	76.4	167.6	Female
13	102.1	85.4	105.2	109.5	68.3	29.7	24.5	40.3	37.0	22.4	15.3	24	73.6	176.5	Female
14	114.0	85.0	92.5	106.4	65.6	31.6	26.6	39.6	38.9	23.3	15.9	22	83.0	176.5	Female
15	117.1	85.0	91.2	111.0	68.0	34.4	28.3	40.1	40.0	24.2	17.6	29	87.8	176.5	Female
16	109.8	84.9	98.0	102.4	59.9	32.0	25.7	37.6	33.7	21.6	15.5	40	70.7	166.4	Female
17	108.9	83.6	108.6	108.3	63.0	31.9	26.0	38.1	36.4	24.5	16.0	29	81.8	182.9	Female
18	112.2	83.6	94.2	104.1	61.5	31.0	25.4	37.2	35.2	22.3	16.1	31	73.2	170.0	Female
19	110.7	83.4	100.5	107.5	67.4	34.2	28.3	40.9	41.2	23.4	15.6	26	80.9	165.1	Female

Upper outliers for 'Female waist girth'

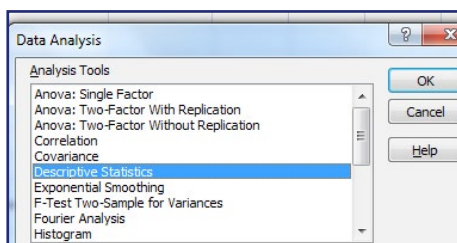
State, with a reason, whether you are removing any of the outliers.

Summary statistics table in Excel

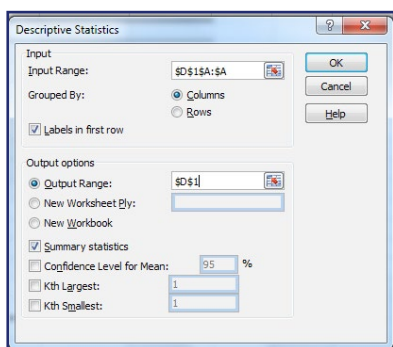
To find summary statistics in Excel



- First make sure the **Data Analysis Toolpak** is in Excel
- Press at the same time **Alt T I** (i.e. Alt and capital T and capital I)
- The **Add-Ins** menu will appear.
- Tick **Analysis ToolPak** then **OK**.



- **Data Analysis** will appear in the **Data** tab.
- Select the worksheet **MaleFemaleWaist**
- Select column **A** (Female waist girth (cm)), then **Data Analysis** (in the **Data** tab)



- Then **Descriptive Statistics, OK**
- **Input Range** column **A** (cells containing the data)
- **Labels in first row** ticked (Excel recognises the first row as headers)
- **Output Range D1** (where you want the output)
- **Summary Statistics** ticked, **OK**

Similarly for the Male waist girth:

- Select column **B** (Male waist girth (cm)), then **Data Analysis** (in the **Data** tab)
- Then **Descriptive Statistics, OK**
- **Input Range** column **B**
- **Labels in first row** ticked
- **Output Range F1**
- **Summary Statistics** ticked, **OK**

Express all values, except for count, to 2 decimal place values:

- Select **E3:E14** in the **Home** tab click on the until the values are expressed to 2 decimal place values. Do the same for **G3:G14**.

Complete the table

	Female waist girth (cm)	Male waist girth (cm)
Mean		
Standard Error		
Median		
Mode		
Standard Deviation		
Sample Variance		
Kurtosis		
Skewness		
Range		
Minimum		
Maximum		
Sum		
Count		

Note: the lower and upper quartiles are not included in this table. These are calculated using the Quartile function, =QUARTILE(range,1) for lower quartile and =QUARTILE(range,3) for upper quartile. These values, and more, can be calculated using Excel functions. See Section 1 for details.

Select the appropriate statistics from the table.

Report

Back to the problem.

Are male and female waist girth measurements the same?

Extension

The problem

Investigate if male and female thigh girths are the same.

Data collection

The data are in the Excel spreadsheet '**Adult Measurements.xlsx**'. Worksheet '**MaleFemaleThigh**'.

Process

Plot the appropriate graphs to compare the distributions of 'Thigh girth' for males and females.

Calculate the appropriate summary statistics.

Check for outliers.

Outlier limit	Female thigh girth (cm)	Male thigh girth (cm)
Lower limit = $Q_1 - 1.5 \times IQR$		
Upper limit = $Q_3 + 1.5 \times IQR$		

Inspect any outliers in the data set.

Report